

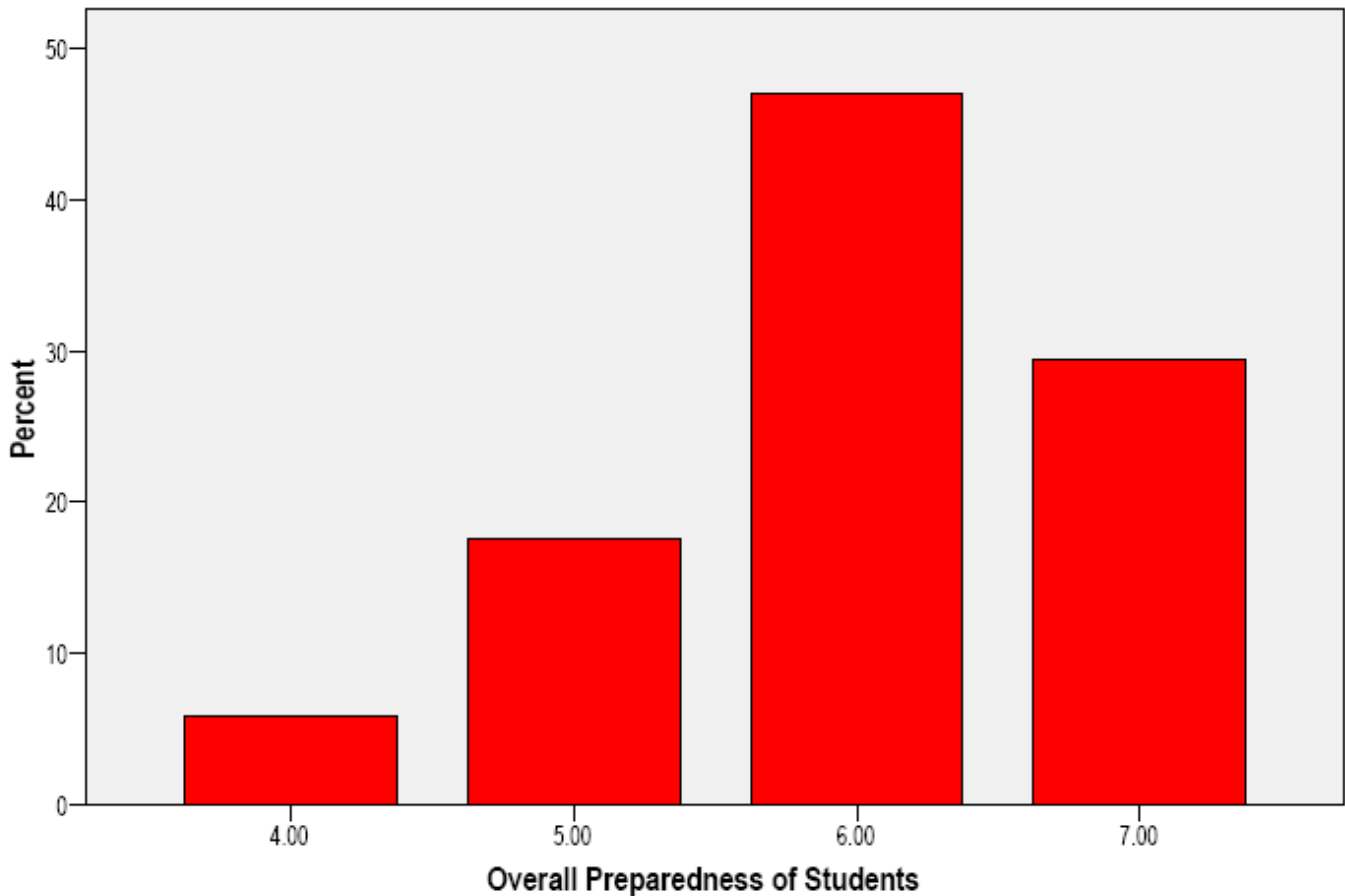
Field Study Supervisor Evaluations of the Program

Between 2005 and 2007 Field Study Supervisors were asked to rate the overall training of the training in addition to appraisals of the skills of each student under their supervision. This overall programmatic appraisal was conducted during Supervisor training sessions and the Annual "Field Study Fiesta."

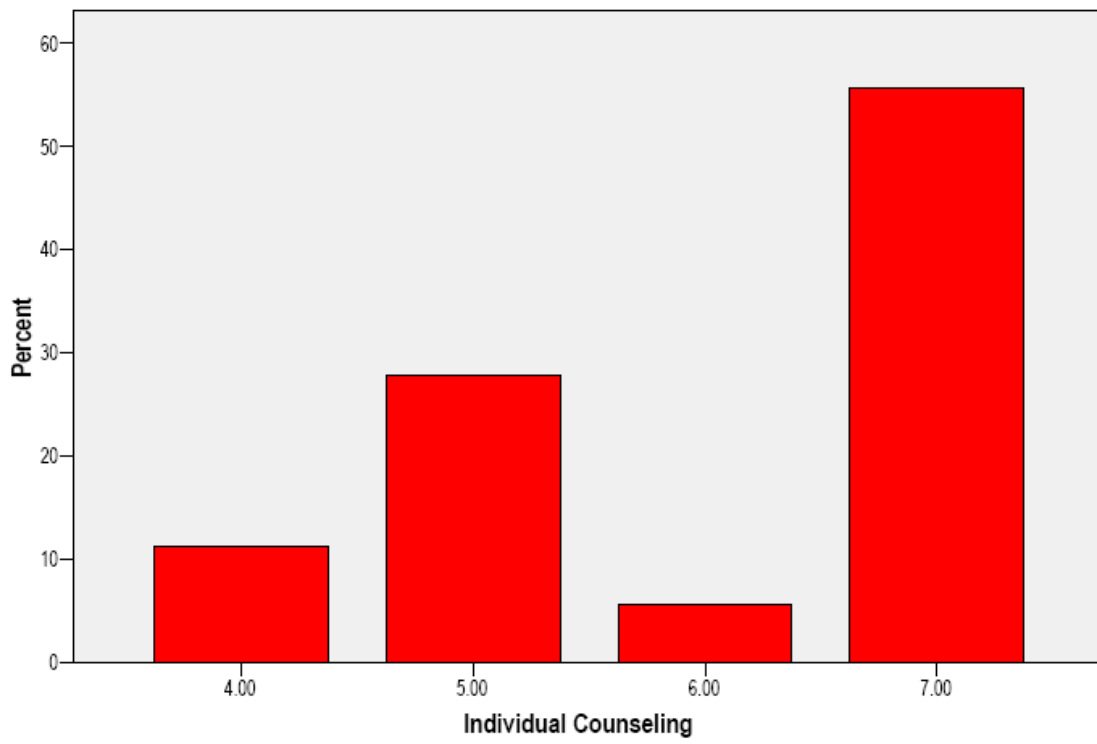
The following data reflect the Field Study Supervisor (n=22) ratings of the program.

**All data were on a 1-8 Likert scale where 1 = "VERY POOR" to 7 = "EXCELLENT."
An 8 indicates "NOT APPLICABLE."**

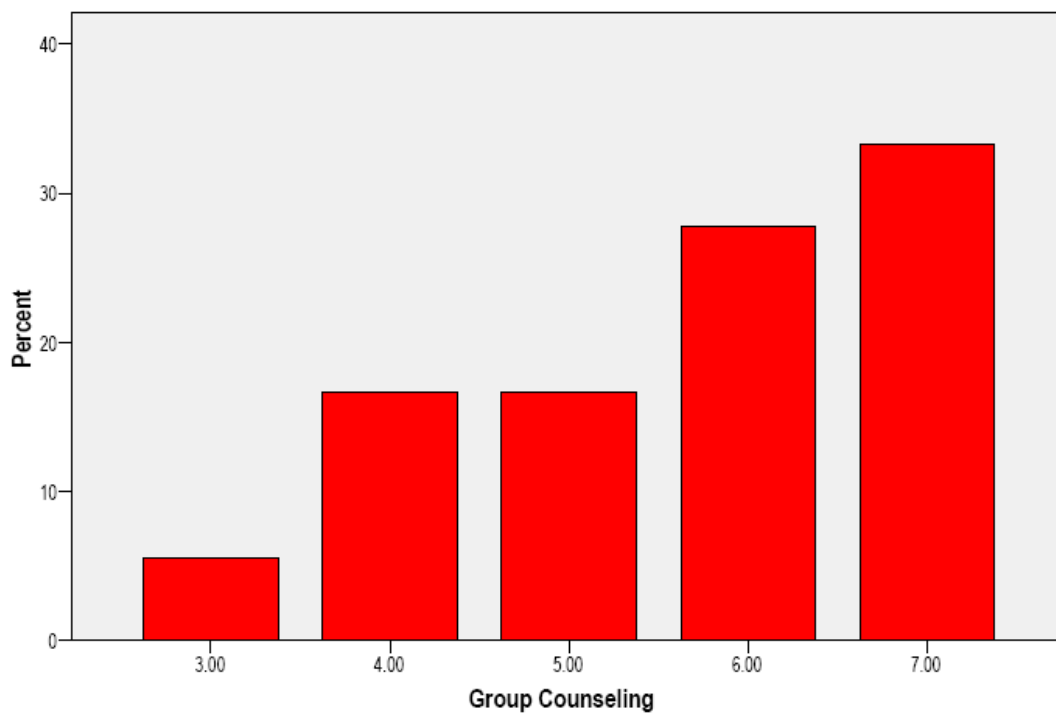
Overall Preparedness of Students



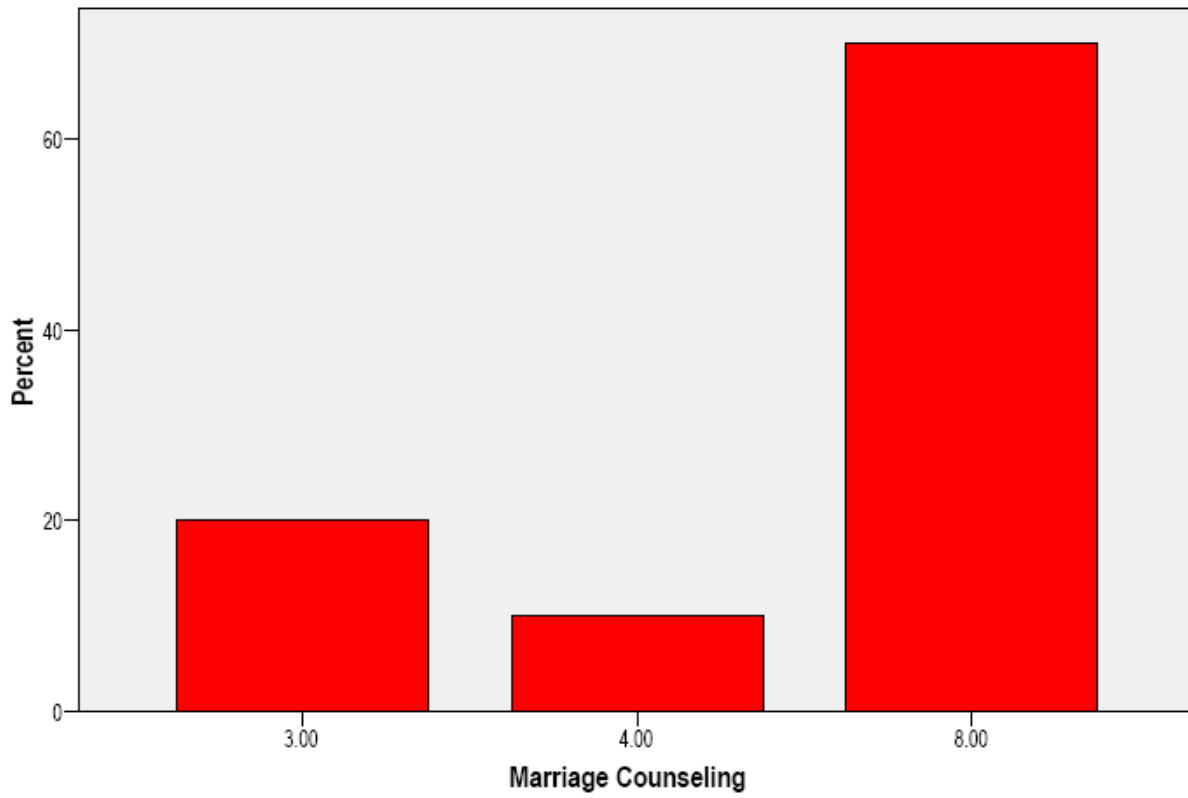
Individual Counseling



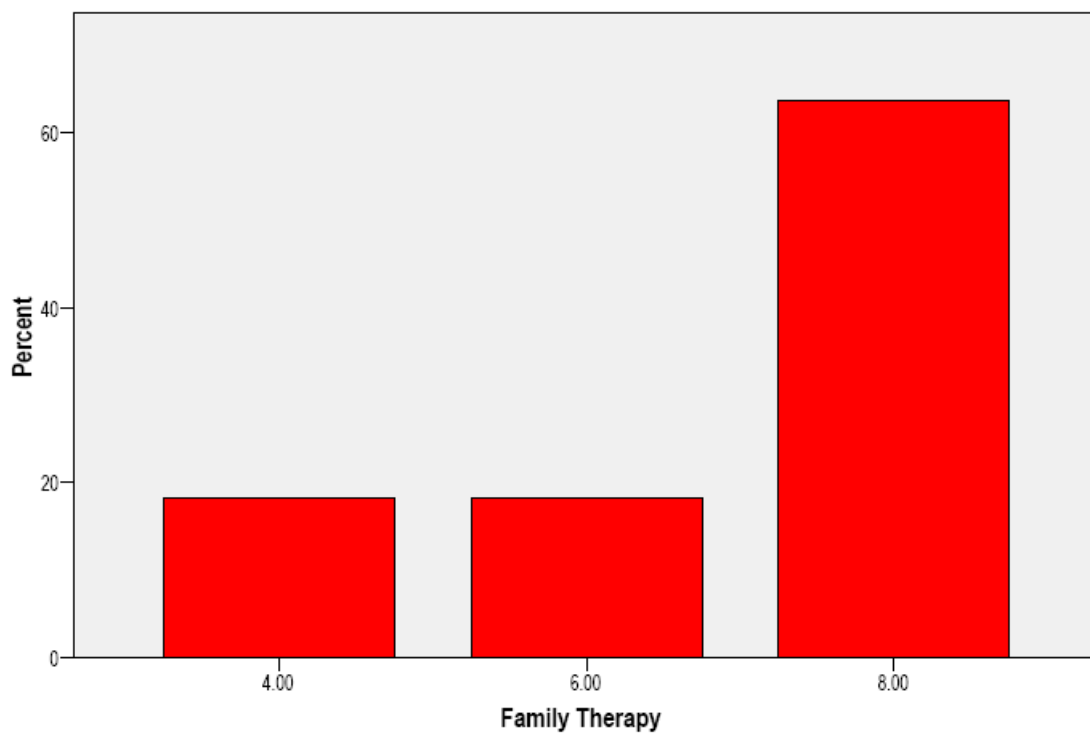
Group Counseling



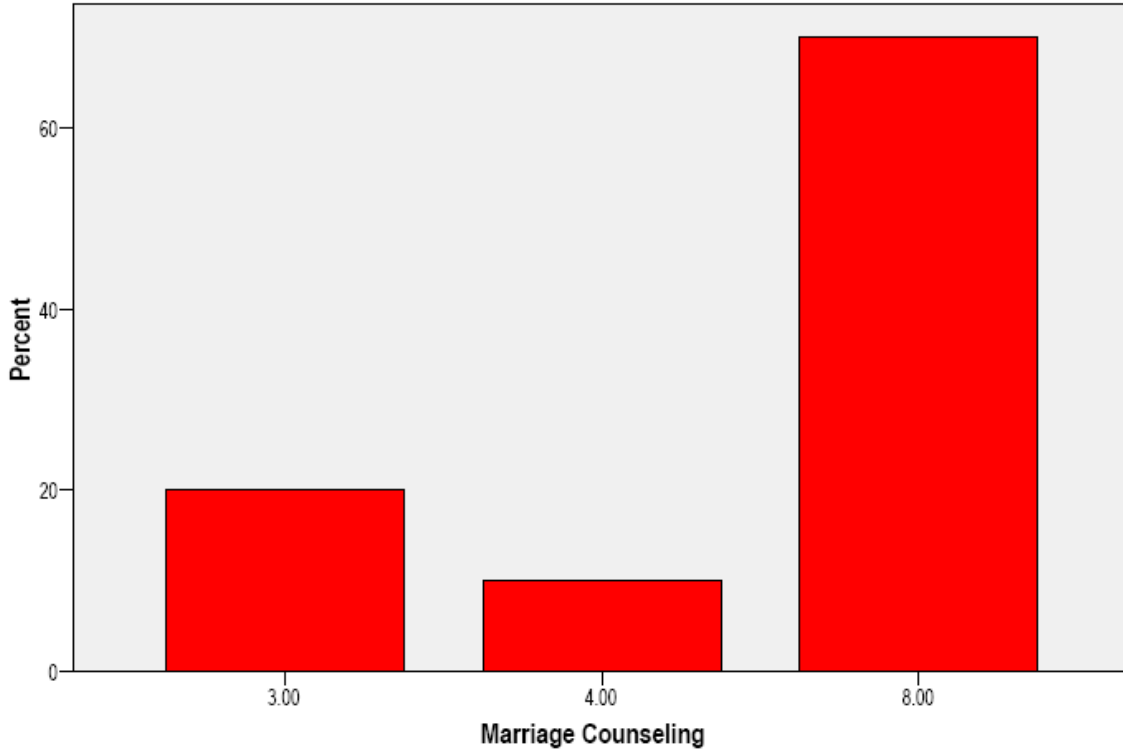
Marriage Counseling



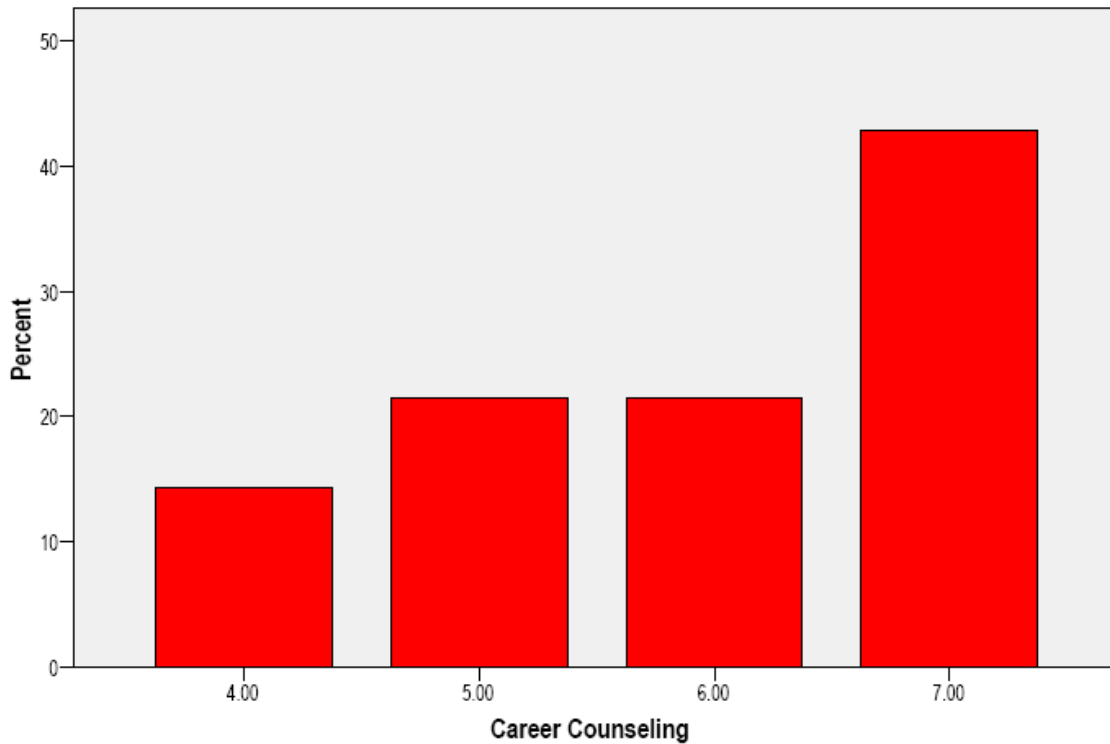
Family Therapy



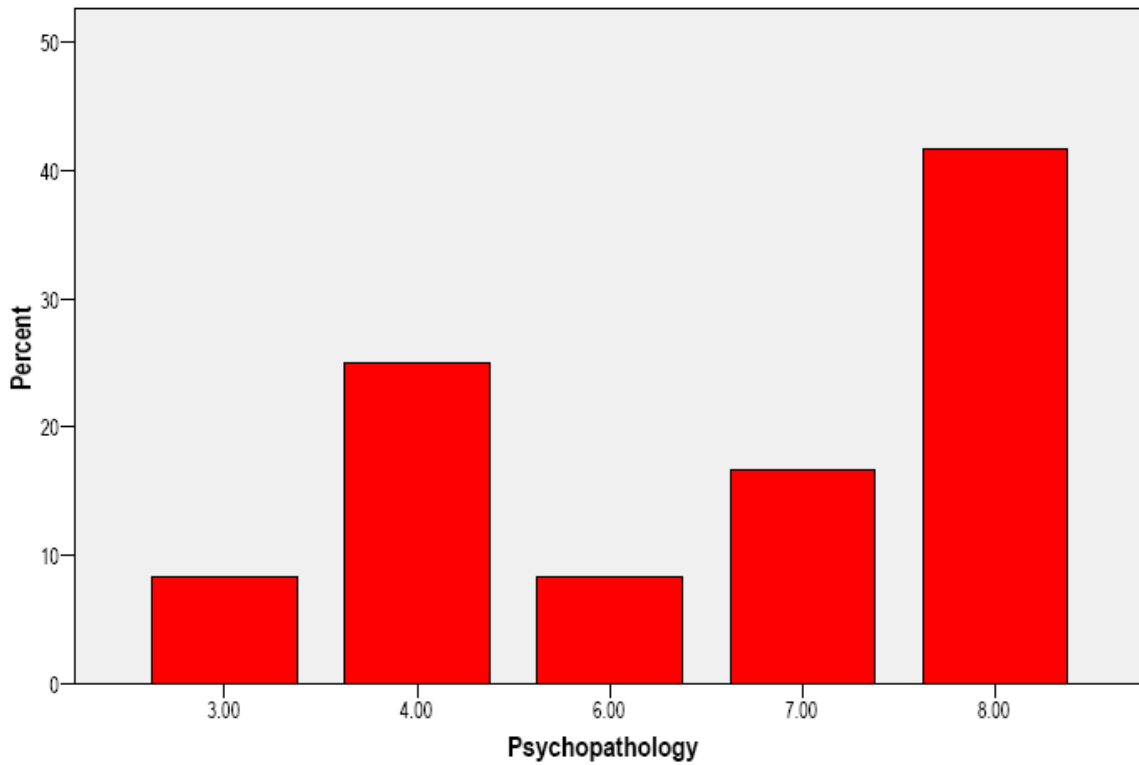
Marriage Counseling



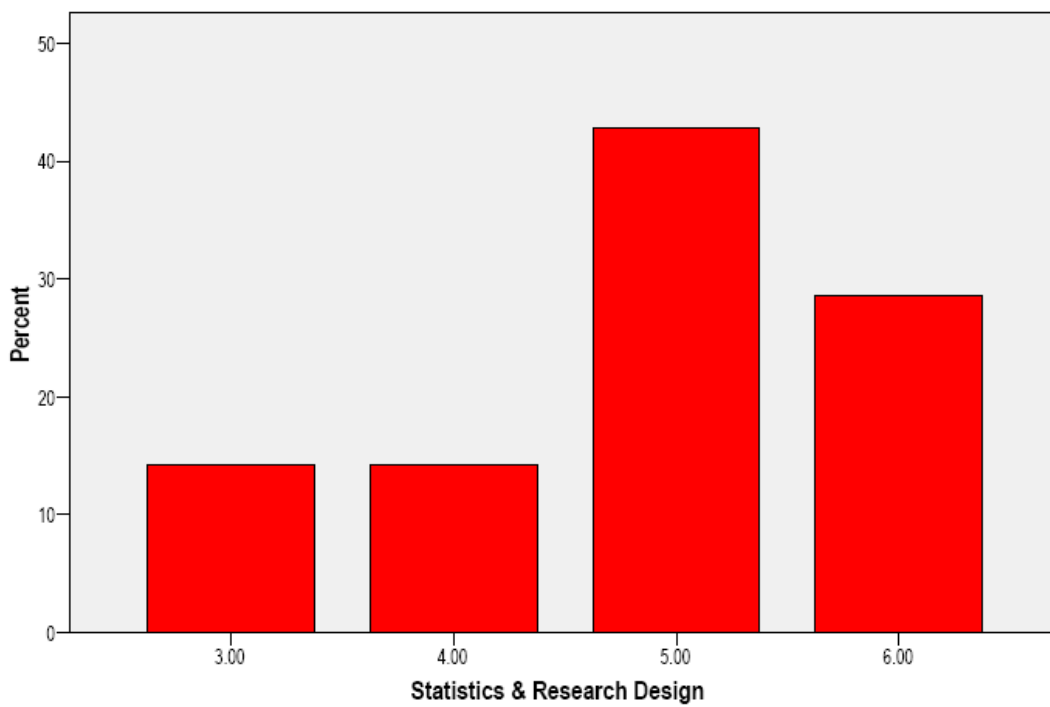
Career Counseling



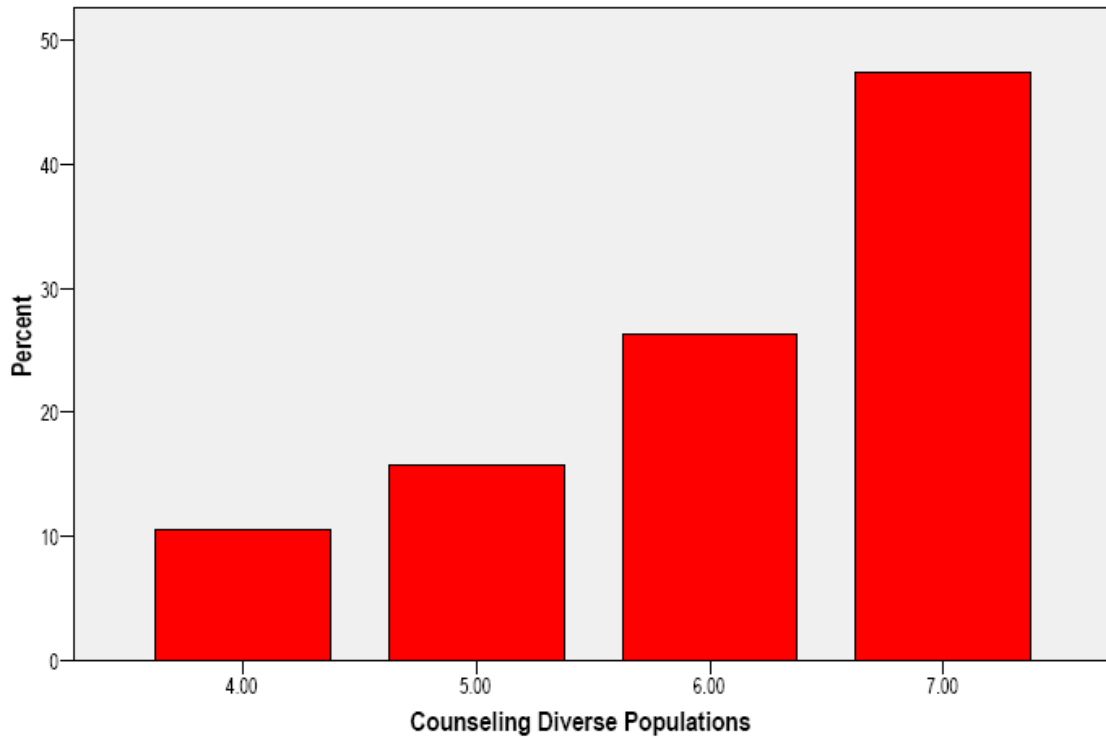
Psychopathology



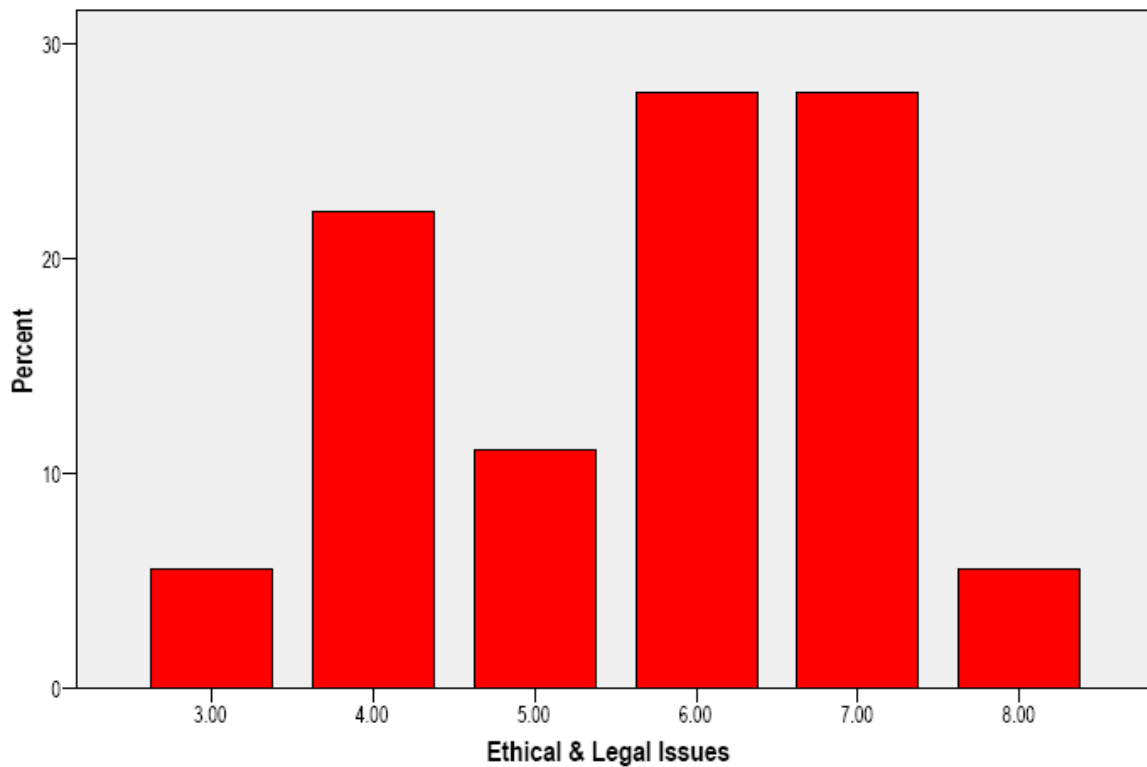
Statistics & Research Design



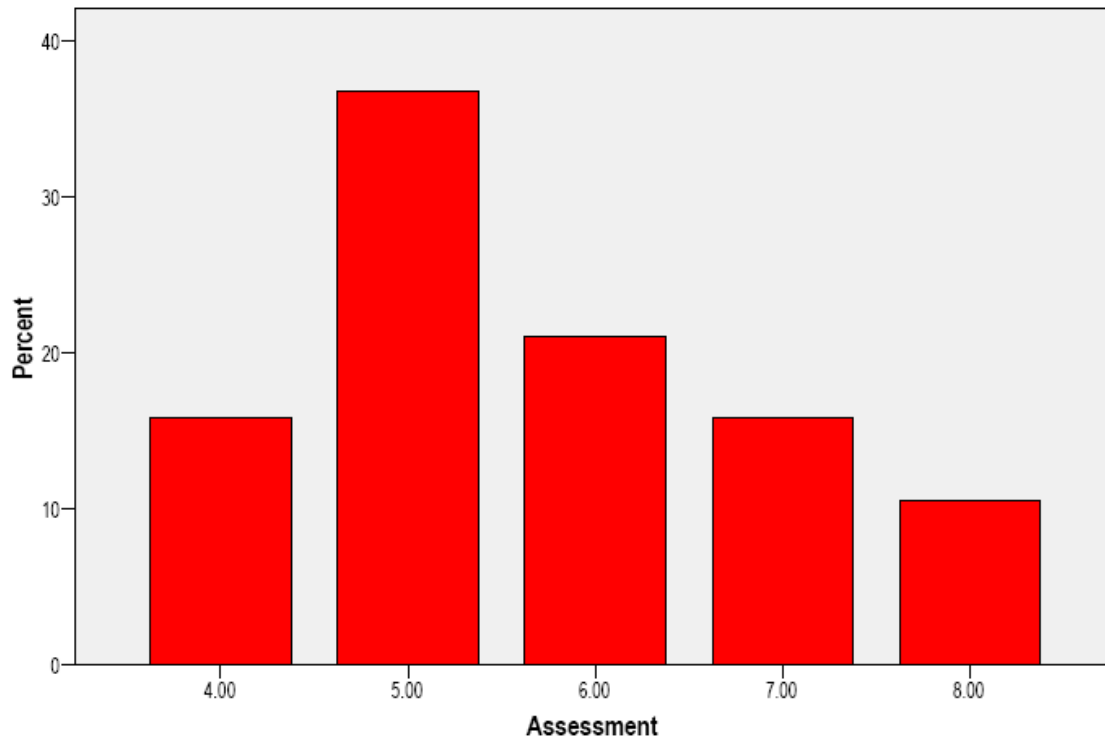
Counseling Diverse Populations



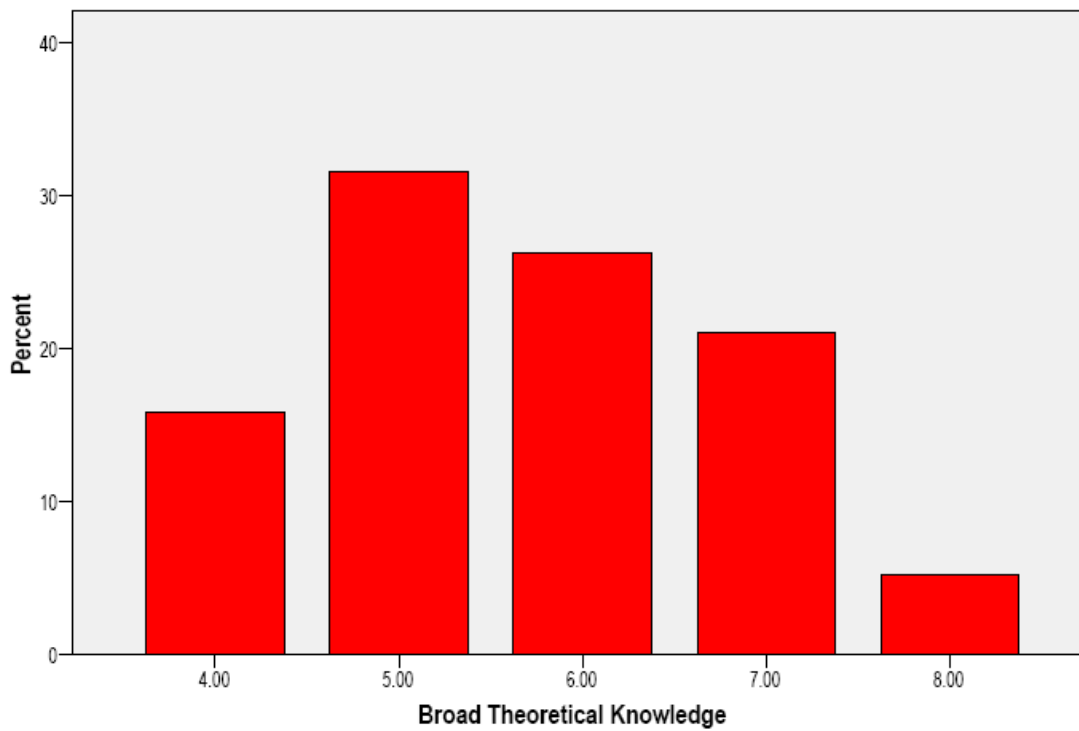
Ethical & Legal Issues



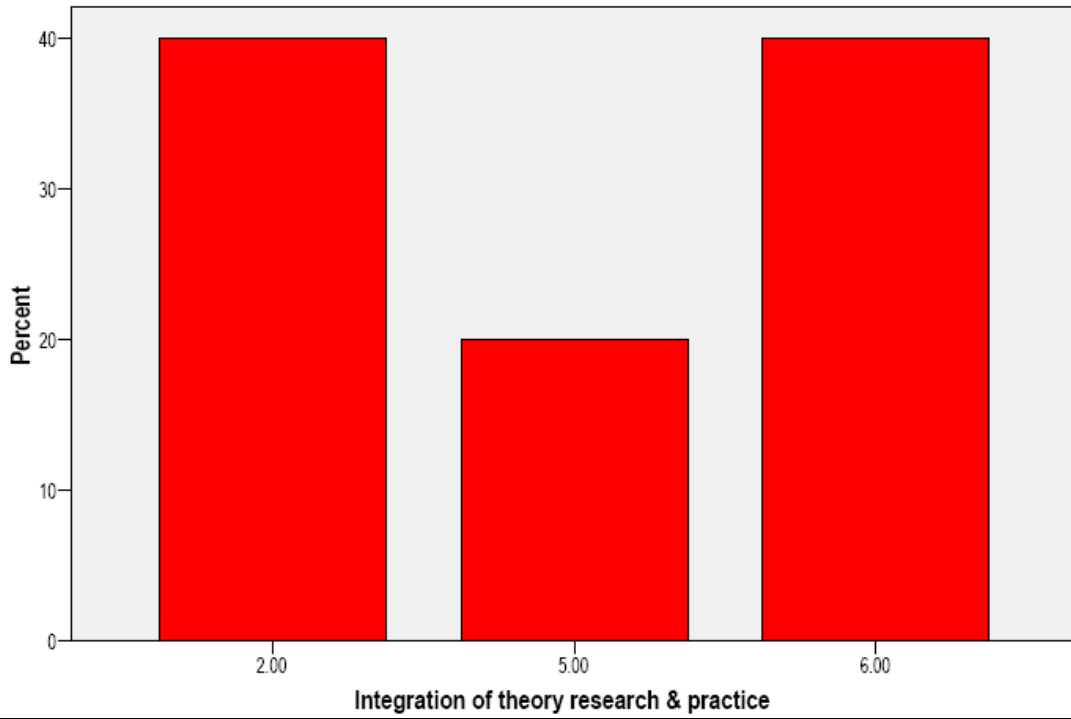
Assessment



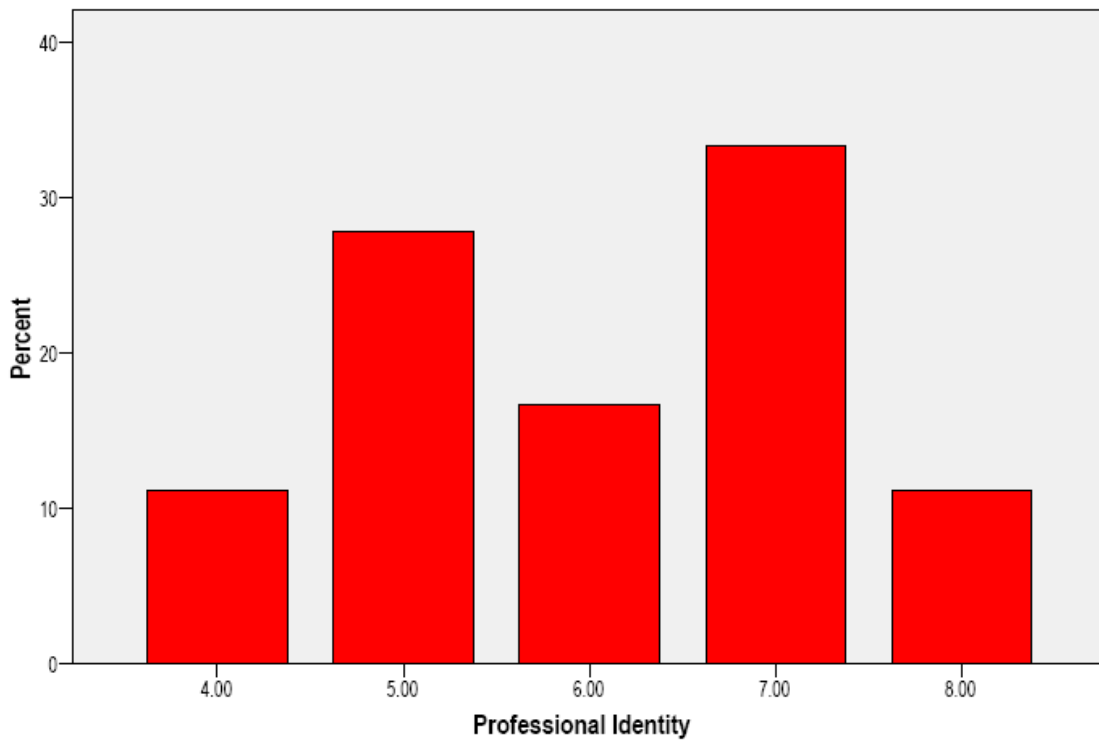
Broad Theoretical Knowledge



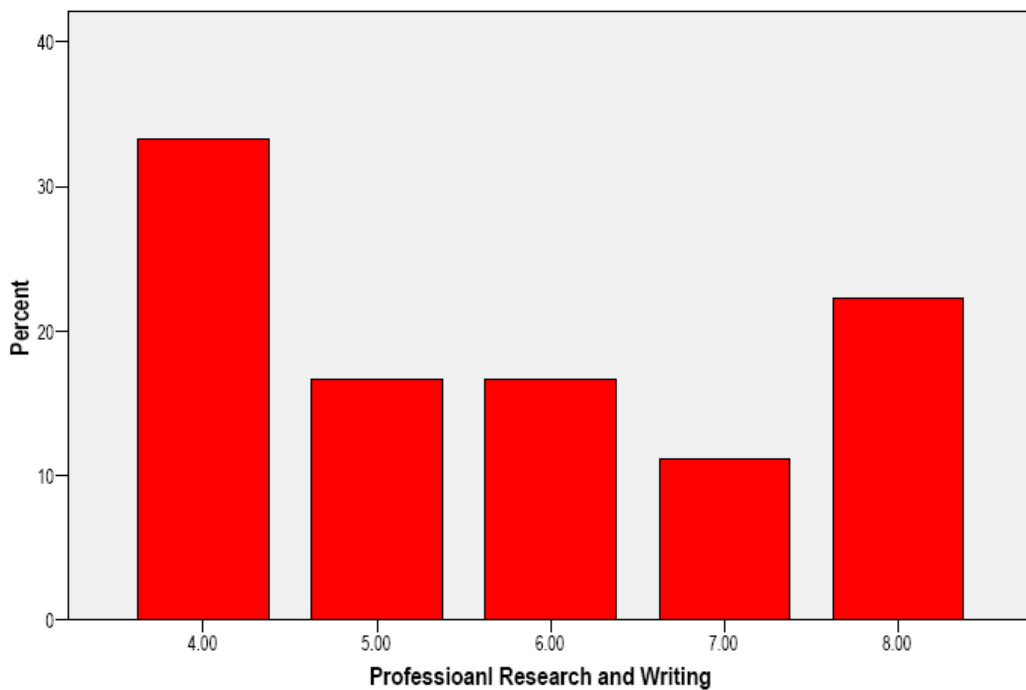
Integration of theory research & practice



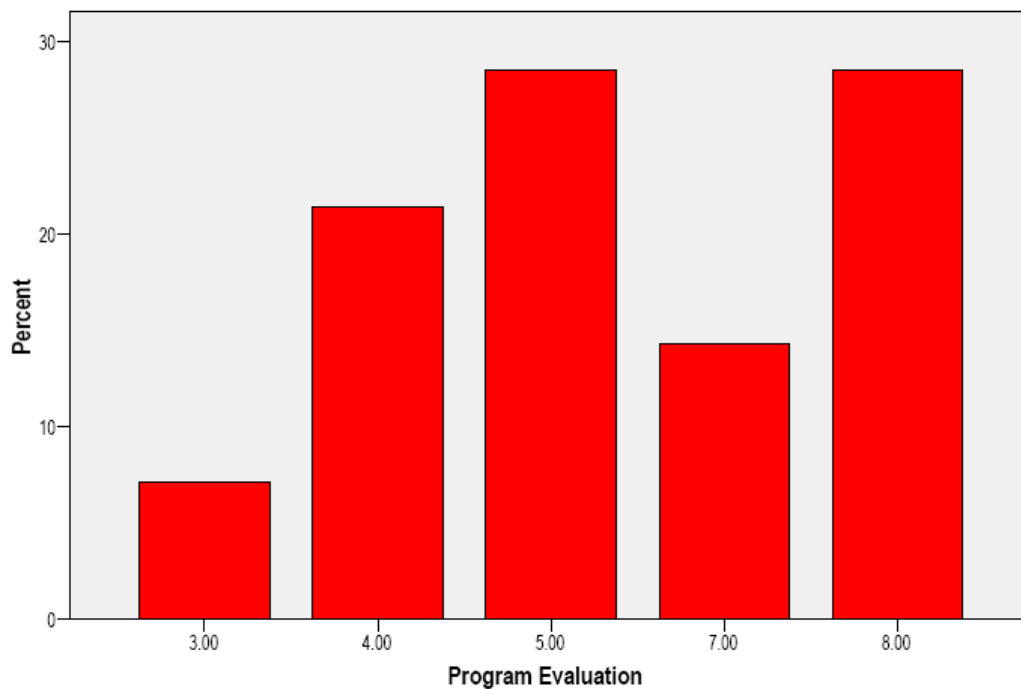
Professional Identity



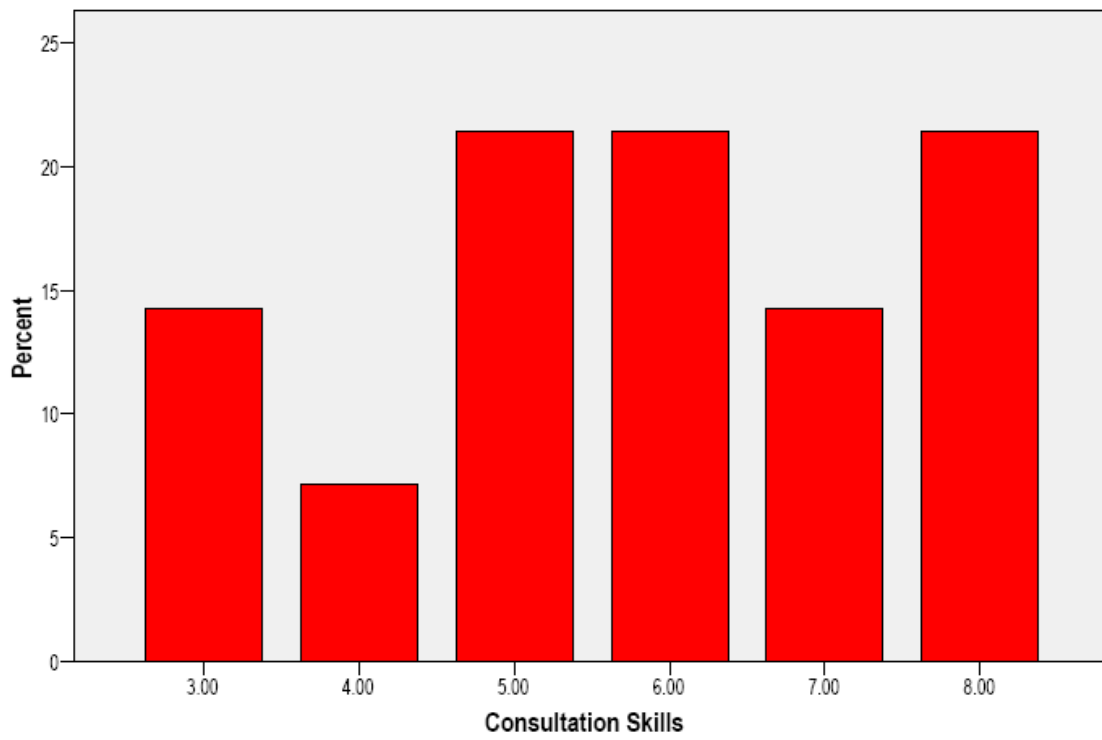
Professional Research and Writing



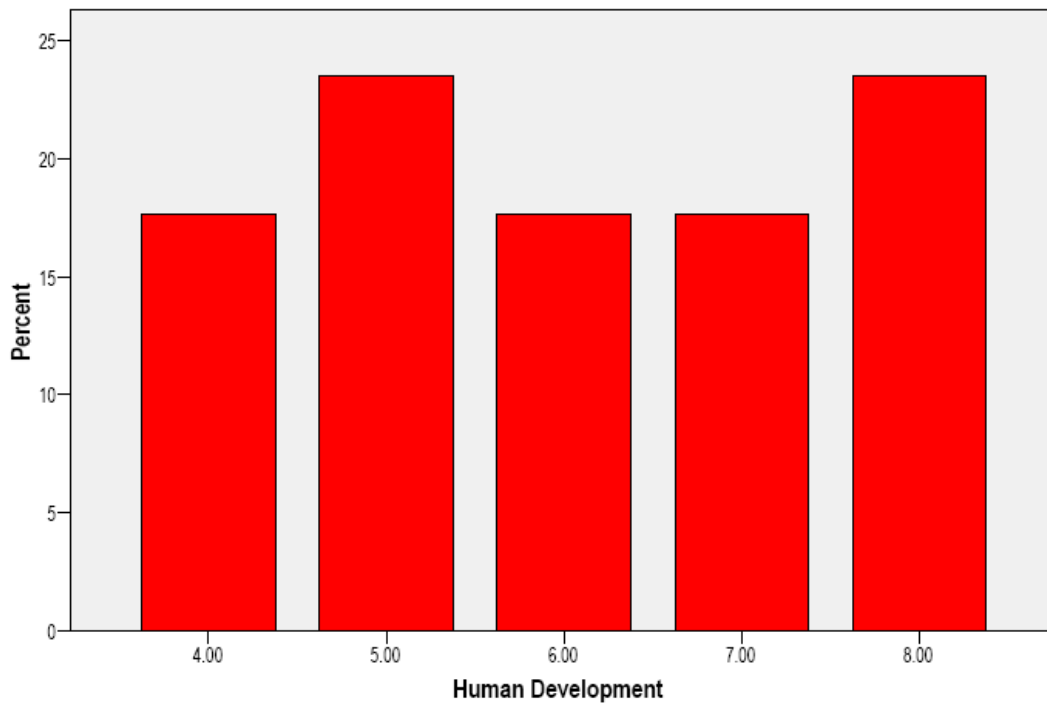
Program Evaluation



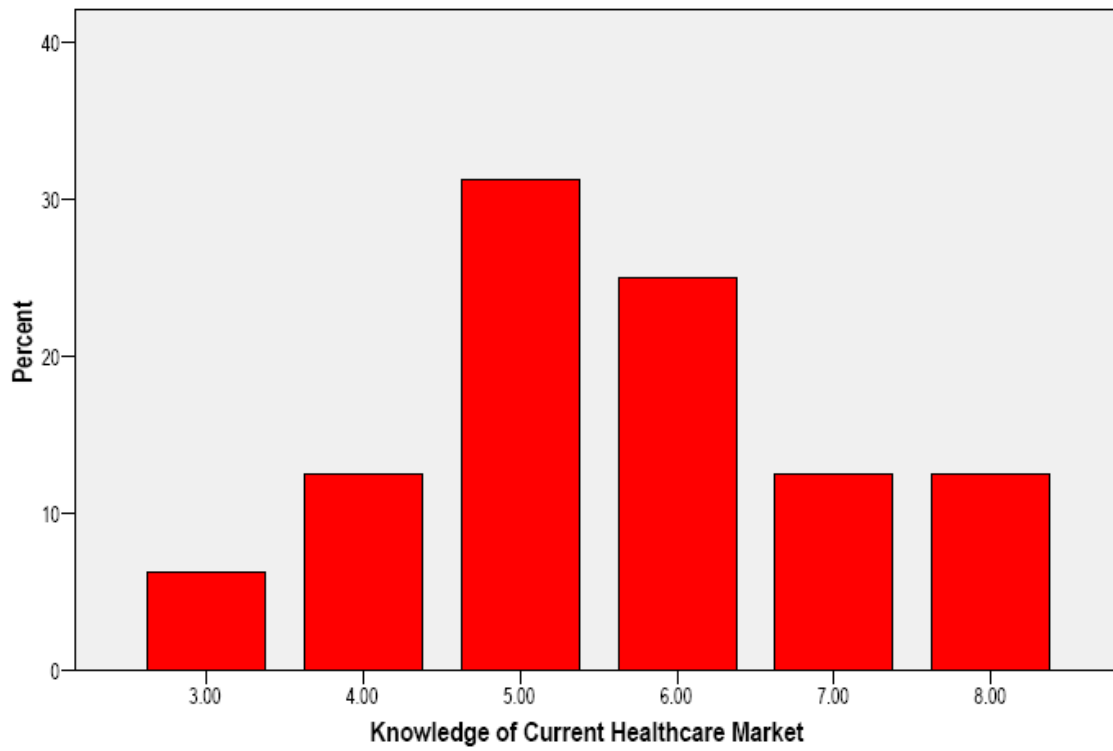
Consultation Skills



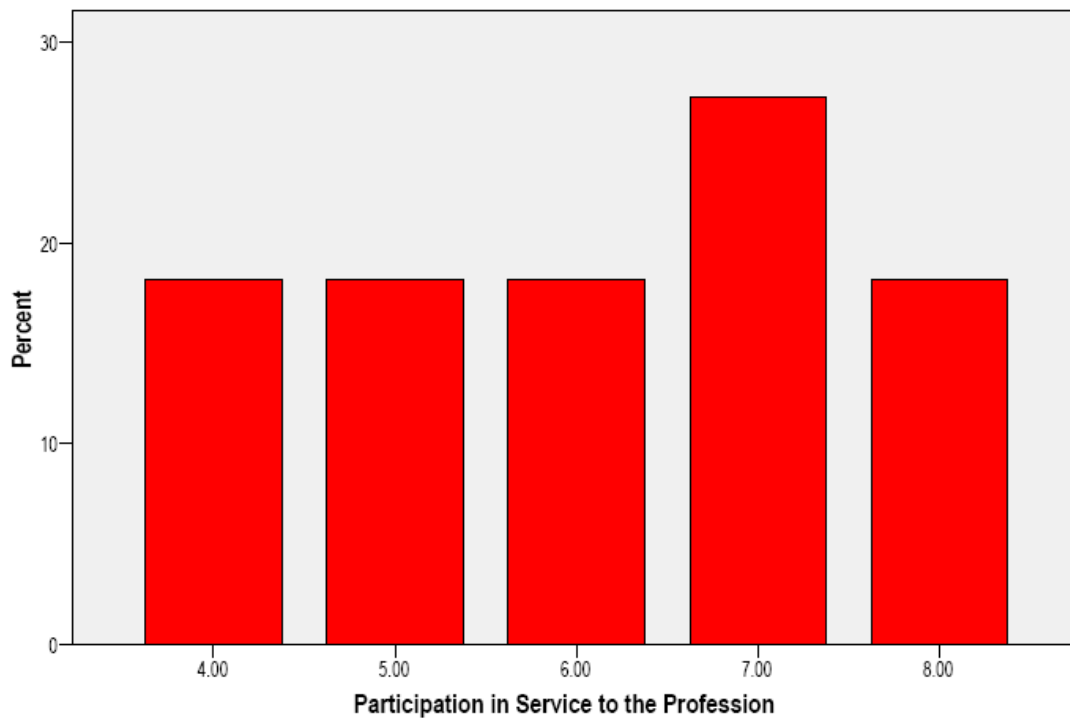
Human Development



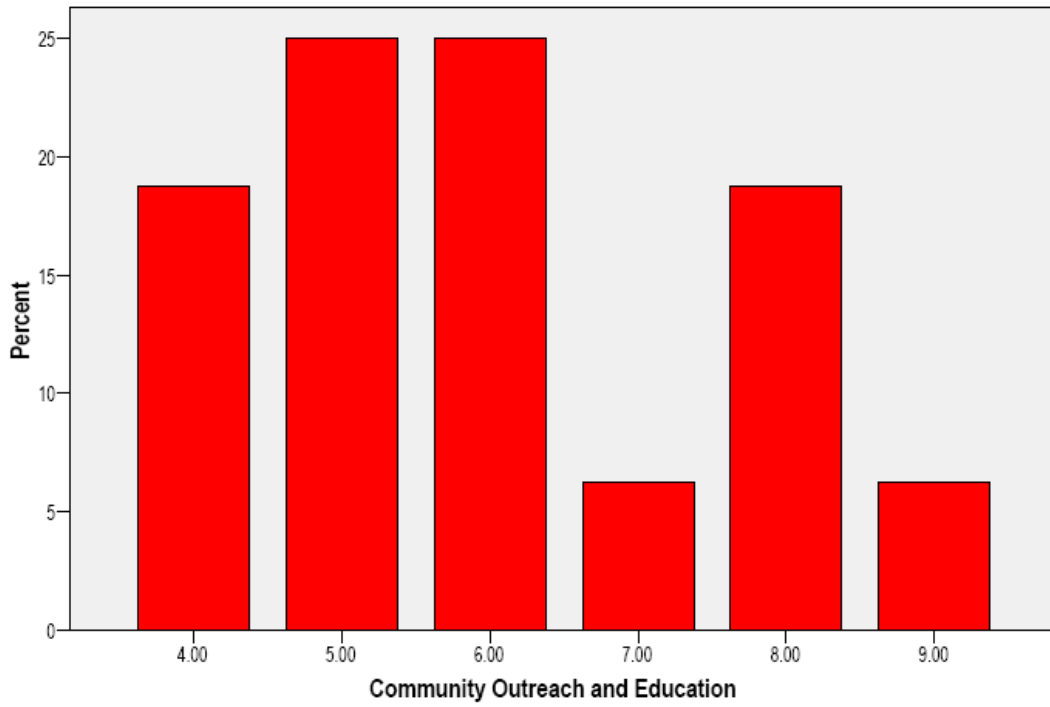
Knowledge of Current Healthcare Market



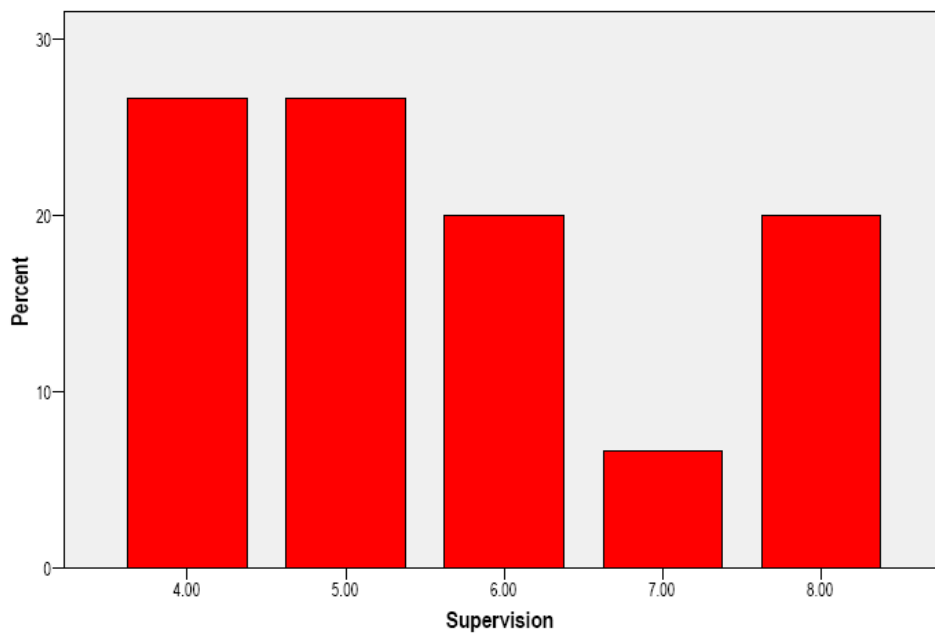
Participation in Service to the Profession



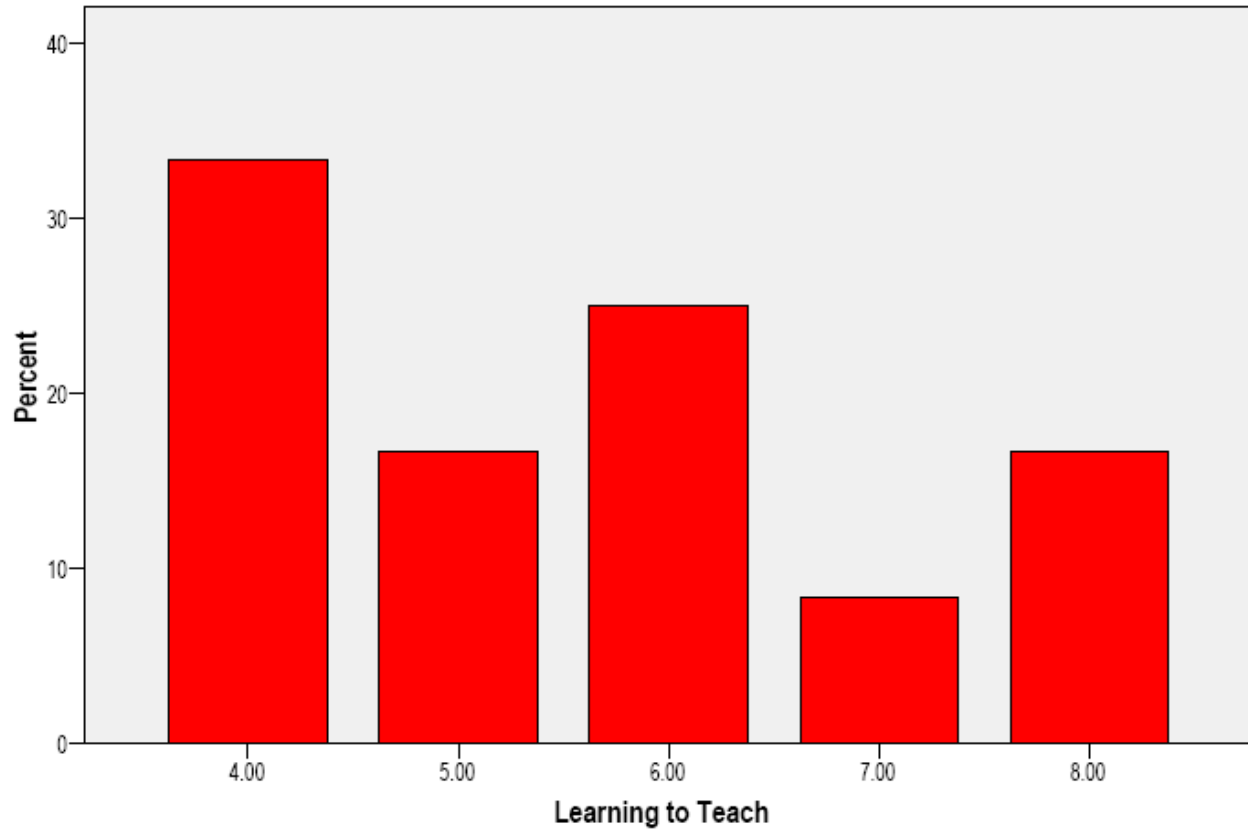
Community Outreach and Education



Supervision



Learning to Teach



Specialization

		Frequency	Percent	Cumulative Percent
Valid	Community	2	9.1	9.1
	Career	5	22.7	31.8
	school	9	40.9	72.7
	MFT	6	27.3	100.0
	Total	22	100.0	

Type of Placement

		Frequency	Percent	Cumulative Percent
Valid	Community	7	31.8	31.8
	Counseling Agency			
	School	14	63.6	95.5
	Junior College	1	4.5	100.0
	Total	22	100.0	